

KEEP OUT OF REACH OF CHILDREN

CAUTION

FIRST AID ORGANOPHOSPHATE

IF SWALLOWED: Immediately call a Poison Control Center. Do not induce vomiting unless told to by a poison control center or doctor. Do not give any liquid to the person. Do not give anything by mouth to an unconscious person.

IF ON SKIN OR CLOTHING: Take off contaminated clothing. Rinse skin immediately with plenty of water for 15-20 minutes. Call a poison control center or doctor for treatment advice.

IF IN EYES: Hold eye open and rinse slowly and gently with water for 15-20 minutes. Remove contact lenses, if present, after the first 5 minutes, then continue rinsing eye. Call a poison control center or doctor for treatment advice.

Have the product container or label with you when calling a poison control center or doctor or going for treatment. You may also contact the National Pesticide Information Center at 1-800-858-7378.

IF INHALED: Remove person to fresh air. If person is not breathing, call 911 or ambulance, then give artificial respiration, preferably mouth-to-mouth if possible. Call a poison control center or doctor for further treatment advice.

Have the product container or label with you when calling a poison control center or doctor or going for treatment. You may also contact the National Pesticide Information Center at 1-800-7378.

NOTE TO PHYSICIAN: Malathion is a cholinesterase inhibitor. Atropine is antidotal. Contains petroleum distillate. May pose aspiration pneumonia hazard.

PRECAUTIONARY STATEMENTS

CAUTION: Harmful if swallowed. Harmful if absorbed through skin. Causes moderate eye irritation. Avoid contact with skin, eyes or clothing. Prolonged or frequently repeated skin contact may cause allergic reactions in some individuals. Wash thoroughly with soap and water after handling.

PERSONAL PROTECTIVE EQUIPMENT

Some materials that are chemical-resistant to this product are barrier laminate or viton. If you want more options, follow the instructions for category G on an EPA chemical resistance category selection chart. Wear long sleeved shirt and long pants, shoes plus socks, and chemical resistant gloves.

USER SAFETY REQUIREMENTS

Follow manufacturer's instructions for cleaning/maintaining PPE. If no such instructions for washables exist, use detergent and hot water. Keep and wash PPE separately from other laundry. Discard clothing and other absorbent materials that have been drenched or heavily contaminated with this product's concentrate. Do not reuse them.

USER SAFETY RECOMMENDATIONS

Users should wash hands before eating, drinking, chewing gum, using tobacco, or using the toilet. Users should remove clothing/PPE immediately if pesticide gets inside. Then wash thoroughly and put on clean clothing. Users should remove PPE immediately after handling this product. Wash the outside of gloves before removing. As soon as possible, wash thoroughly and change into clean clothing.

ENVIRONMENTAL HAZARDS

To protect the environment, do not allow pesticide to enter or run off into storm drains, drainage ditches, gutters or surface waters. Applying this product in calm weather when rain is not predicted for the next 24 hours will help to ensure that wind or rain does not blow or wash pesticide off the treatment area. Rinsing application equipment over the treated area will help avoid run off to water bodies or drainage systems.

This pesticide is highly toxic to bees exposed to direct treatment on blooming crops or weeds. Do not apply this product or allow it to drift to blooming crops or weeds while bees are actively visiting the treatment area.

PHYSICAL OR CHEMICAL HAZARDS

Combustible: Do not use or store near heat or open flame.

DIRECTIONS FOR USE

It is a violation of Federal Law to use this product in a manner inconsistent with its labeling.

PRECAUTIONS AND RESTRICTIONS

• **DO NOT APPLY THIS PRODUCT IN A WAY THAT WILL CONTACT ANY PERSON OR PET, EITHER DIRECTLY OR THROUGH DRIFT.**

• Do not allow people or pets to enter the treated area until sprays have dried.
• **DO NOT APPLY THIS PRODUCT THROUGH ANY TYPE OF IRRIGATION SYSTEM.**

- Do not use indoors
- Make applications with a backpack or compressed air sprayer.

OUTDOOR ORNAMENTALS

For use on listed insects. Do not apply to Boston, Pteris or Maidenhair Ferns, Viburnum, Lantana, Crassula, Canaerti Junipers, Petunias, or small leaf Spirea since injury may result.

Pest Controlled	Rate/ 1 Gallon	Minimum Retreatment	Reentry Interval	Maximum Applications Interval	Comments per
year					
Aphids, Spider Mites	1.5 teaspoons	10 days	12 hours	6	
Bagworms, Birch Leaf Miner, Boxwood Leaf Miner	2 teaspoons	10 days	12 hours	4	
European Pine Shoot	1.5 teaspoons	10 days	12 hours	6	
Bagworms, Birch Leaf Miner, Boxwood Leaf Miner	2 teaspoons	10 days	12 hours	4	
European Pine Shoot	1.5 teaspoons	10 days	12 hours	6	
Moth, Four-lined Leaf Bug, Japanese Beetle Adult, Potato Leafhopper, Rose Leafhopper, Tarnished Plant Bug Thrip					
Lace Bug	1 teaspoon	10 days	12 hours	8	
Mealybugs, Whiteflies	1 teaspoon	10 days	12 hours	6	
Oak Kermes	2 teaspoons	10 days	12 hours	3	
Tent Caterpillar	2 teaspoons	10 days	12 hours	4	

OUTDOOR ORNAMENTALS CONTINUED

Pest Controlled	Rate/ 1 Gallon	Minimum Retreatment	Reentry Interval	Maximum Applications Interval	Comments per
year					
Oyster Shell Scale	1 teaspoons	10 days	12 hours	8	
Euonymus Scale, Scurfy Scale	1.5 teaspoons	10 days	12 hours	6	
Azalea Scale, Magnolia Scale, Pine Leaf Scale	2.25 teaspoons	10 days	12 hours	4	
Fletcher Scale, Florida Red Scale, Juniper Scale	2 teaspoons	10 days	12 hours	4	Apply when scale Crawlers have settled on foliage.
Black Scale Crawlers, Soft Brown Scale	2.25 teaspoons	10 days	12 hours	3	
Monterey Pine Scale	2.5 teaspoons	10 days	12 hours	3	
Pine Needle Scale	4 teaspoons	10 days	12 hours	2	
Wax Scale	4 teaspoons	10 days	12 hours	2	Apply in spring when crawlers are active

VEGETABLES

Thoroughly spray plants particularly the undersides of leaves and the developing fruit.

The retreatment interval is indicated by the number in () following the crop. The number represents the minimum days between applications. **The REI is the Restricted Entry Interval. The number following REI represents the minimum hours between application and safe handling of the plants.**

The following rates are mixed in 1 gallon of water. Use 1 gallon of the mixed spray per 500 sq. ft.

CELERY: (7) For Aphids, Spider Mites -Use 2 tsps. per gallon. REI is 24 hours. Do not make more than 3 applications per year. Do not apply within 7 days of harvest.

CUCUMBER: (7) For Aphids, Spider Mites -Use 2 tsps. per gallon REI is 24 hours. Do not make more than 3 applications per year. Do not apply within 1 day of harvest.

SQUASH summer: (7) For Aphids, Spider Mites, Cucumber Beetle, Leaf Hopper - Use 2 tsps. per gallon. Do not apply unless plants are dry. REI is 24 hours. Do not make more than 5 applications per year. Do not apply within 1 day of harvest.

SQUASH winter: (7 days) For Aphids, Spider Mites, Cucumber Beetle, Leaf Hopper - Do not apply unless plants are dry. Use 2 tsps. per gallon. REI is 12 hours. Do not make more than 3 applications per year. Do not apply within 1 day of harvest.

CANTALOUPE: (7) For Aphids, Spider Mites, Cucumber Beetle, Leaf

MALATHION 50% E.C.

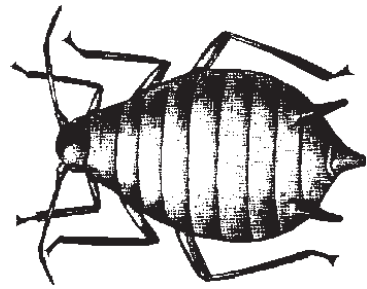
ACTIVE INGREDIENT: BY WT.
Malathion: 0,0-dimethyl phosphorodithioate of diethyl mercaptosuccinate ... 50.0%
INERT INGREDIENTS: 50.0%
*Contains xylene range aromatic solvent. Contains 4.4 lbs. Malathion per gallon.



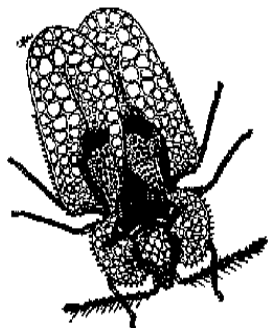
SEE INSIDE OF BOOKLET FOR FULL LABEL DIRECTIONS AND PRECAUTIONS

Southern Agricultural Insecticides, Inc.

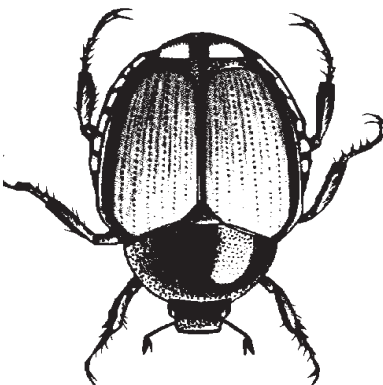
P.O. BOX 218 Palmetto, FL 34220
EPA Reg. No. 829-282 B2
EPA EST. NO. 829-FL-1



Aphid

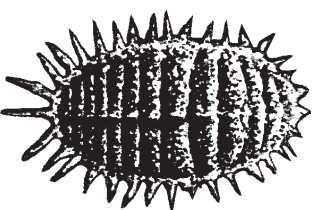


Lace Bug



Japanese Beetle

Mealybug



CONDITIONS OF SALE AND WARRANTY

Our recommendations for use of this product are based upon tests believed to be reliable. Follow directions carefully. Timing and method of application, weather and crop conditions, mixtures with other chemicals and other influencing factors in the use of this product are beyond the control of the seller. To the extent consistent with applicable law, Buyer assumes all risks of use, storage, and handling not in strict accordance with the directions and precautions given herewith.

If any part of this label is missing or for information and questions concerning this product please contact us by email at info@southernag.com

Southern Agricultural Insecticides, Inc.

P.O. Box 218 Palmetto, FL 34220
P.O. Box 429 Hendersonville, NC 28793
P.O. Box 85 Boone, NC 28607

Limes / not Calif.	2 tsps./gallon	4	30 days	12
Oranges / not Calif.	2 tsps./gallon	4	30 days	12
Tangerines / not Calif.	2 tsps./gallon	4	30 days	12
Tangelos / not Calif.	2 tsps./gallon	4	30 days	12

ADULT MOSQUITO CONTROL

For control of adult mosquitoes. Use on **lower outside foundations of homes** or as a spot treatment for yards and lawns. Apply spray mixture as a fine mist or fog to **lower outside foundations of home** or shrubs. Dilute Malathion 50% E.C. at the rate of 4 1/2 oz. per gallon of water. Repeat application as necessary. Restriction: Do not apply to any building that houses animals. Avoid spray contact with auto finishes as product may produce spotting.

STORAGE AND DISPOSAL

Do not contaminate water, food, or feed by storage and disposal. **PESTICIDE STORAGE:** Malathion 50% EC should be stored in the original unopened container in a secure dry place. Do not contaminate with other pesticide or fertilizers. The product should never be heated above 55° C (131° F), and should not be stored for long periods of time at a temperature in excess of 25° C (77° F). **PESTICIDE DISPOSAL AND CONTAINER HANDLING:** Nonrefillable container. Do not reuse or refill this container. **If empty:** Place in trash or offer for recycling if available. **If partly filled:** Call your local solid waste agency or 1-800-CLEANUP for disposal instructions. Never place unused product down any indoor or outdoor drain.

PEACHES: (11) For Spider Mites, Oriental Fruit Moth, and Plum Curculio - Use 2 tsps. per gallon. Do not make more than 7 applications per year. REI is 24 hours. Spray when damage is first seen or is anticipated. Do not apply later than 7 days before harvest.

STRAWBERRIES: (7) For the control of Spider Mites, and Aphids - Use 1 tsp. per gallon. Do not make more than 4 applications per year. REI is 12 hours. Treat when insects first appear. Do not apply later than 3 days before harvest. **NOTE:** Do not apply when fruit is in bloom and bees are present.

PECANS: (7) To control Spider Mites, Aphids, Pecan Nut Casebearer and Pecan Phylloxera - Use 2 tsps. per gallon and apply with a pressure sprayer. Do not make more than 4 applications per year. REI is 24 hours. Treat when insects are first seen or their damage is anticipated. Do not apply within 7 days of harvest.

OUTDOOR CITRUS

For control of Black Scale, California Scale, Citricola Scale, Soft Scale and Yellow Scale, Florida Red & Purple Scale, the Mediterranean Fruit Fly, Thrips and Aphids. (This spray will also suppress Spider Mites that may be present.) Apply sprays to give thorough coverage of fruit and the upper and lower sides of leaves and twigs when insects are present or their damage is eminent. Restriction: Do not apply when trees are in bloom or within 7 days of harvest. The following rates are mixed in 1 gallon of water. Use 1 gallon of the mixed spray per 500 sq. ft.

Product	Ounces/500 sq. ft.	Max. applications per year		
		Retreatment Interval	Hours REI	
Grapefruit/ not Calif.	2 tsps./gallon	4	30 days	12
Kumquats	2 tsps./gallon	4	30 days	48
Lemons/ FL. only	2 tsps./gallon	1	None	12

PEPPERS: (5) For Aphids - 1 tsp. per gallon. Do not make more than 4 applications per year. REI is 12 hours. Do not apply within 3 days of harvest.

POTATOES: (7) For Aphids, Leaf Hoppers, Mealybugs -Use 1 tsp. per gallon. Do not make more than 4 applications per year. REI is 12 hours. No waiting time till harvest.

RADISHES: (7) For Aphids - Use 2 tsps. per gallon. Do not make more than 3 applications per year. REI is 12 hours. Do not apply within 7 days of harvest.

TOMATOES: (5) For Aphids, Spider Mites -Use 2 tsps. per gallon. 1 day to harvest. Do not make more than 5 applications per year. REI is 12 hours. Do not apply within 7 days of harvest.

FRUIT

The retreatment interval is indicated by the number in () following the crop. The number represents the minimum days between applications. The REI is the Restricted Entry Interval. The number following REI represents the minimum hours between application and safe handling of the plants. The following rates are mixed in 1 gallon of water. Use 1 gallon of the mixed spray per 500 sq. ft.

GRAPES: (14) For Leaf Hoppers, Spider Mites, Mealybugs - Use 2 tsps. per gallon. Do not make more than 3 applications per year. REI is 3 days for girdling and tying; 24 hrs for all other activities. Do not apply later than 3 days before harvesting. May cause injury to foliage. Check with local Agricultural Authorities.

CHERRIES: (14) For Black Cherry Aphids and Fruit Tree Leaf Rollers - Use 2 tsps. per gallon. Do not make more than 6 applications per year. REI is 12 hours. Thoroughly spray trees. Do not apply later than 3 days before harvest. May injure foliage.

PEARS: (7) To control Codling Moth, Fruit Tree Leaf Roller, Pear Psylla, Plum Curculio, and Red-Banded Leaf Roller - Use 2 tsps. per gallon. Do not make more than 2 applications per year. REI is 12 hours. Do not apply later than 1 day before harvest. May injure Bosc pears in the Northeast.

Hopper - Use 2 tsps. per gallon. REI is 12 hours. Do not make more than 2 applications per year. Do not apply within 1 day of harvest. Do not apply unless plants are dry.

CABBAGE: (7) For Aphids, Imported Cabbage Worm, Cabbage Looper, Leaf Hopper - Use 2 tsps. per gallon. Do not make more than 6 applications per year. REI is 48 hours. Do not apply within 7 days of harvest.

BROCCOLI: (7) For Aphids, Imported Cabbage Worm, Cabbage Looper, Leaf Hopper - Use 2 1/2 tsps. per gallon. Do make more than 2 applications per year. REI is 48 hours. Do not apply within 7 days of harvest.

KALE: (5) For Aphids, Imported Cabbage Worm, Cabbage Looper, Leaf Hopper - Use 2 tsps. per gallon. Do not make more than 3 applications per year. REI is 12 hours. Do not apply within 7 days of harvest.

MUSTARD: (5) For Aphids, Imported Cabbage Worm, Cabbage Looper, Leaf Hopper - Use 2 tsps. per gallon. REI is 12 hours. Do not make more than 3 applications per year. Do not apply within 7 days of harvest.

TURNIPS: (greens 5, roots 7) For Aphids, Imported Cabbage Worm, Cabbage Looper, Leaf Hopper - Use 2.5 tsps. per gallon. Do not make more than 3 applications per year. REI is 12 hours. Do not apply within 7 days of harvest.

HEAD LETTUCE: (6) For Aphids, Imported Cabbage Worm, Cabbage Looper, Leaf Hopper - Use 2 tsps. per gallon. Do not make more than 3 applications per year. REI is 24 hours. Do not apply within 14 days of harvest.

EGGPLANT: (5) For Aphids, Spider Mites - Use 1 tsp. per gallon. Do not make more than 10 applications per year. REI is 12 hours. Do not apply within 3 days of harvest.

ONIONS: (7) For Thrips - Use 2 tsps. per gallon. Do not make more than 3 applications per year. REI is 12 hours. Do not apply within 3 days of harvest.